



The Outreach Foundation REACHING OUT



Spring/Summer 2017

381 Riverside Drive, Suite 110 • Franklin, Tennessee 37064 • (615) 778-8881
(615) 778-8887 fax • info@theoutreachfoundation.org • www.theoutreachfoundation.org

Connecting God's People with God's Work in the World 2016 MINISTRY HIGHLIGHTS

Through you our donors, God richly blessed The Outreach Foundation in 2016. Because of your trust in us and our responsibility to you, we constantly ask ourselves if we are accomplishing the three priorities set by our Board of Trustees. Below we reflect upon those three priorities and share ministry highlights for each.

Priority 1: Helping the church live out its missional calling

In Jesus' Great Commission, he calls us to go out and make disciples of all nations. (Matt 28:19) In light of that, Outreach works with churches across the U.S. to help them better understand Jesus' command and to help them be more engaged in his work. Kairos Church in Atlanta typifies a church living into that call:

As a new church development, Kairos Church began in 2008 in a living room. Then, as the congregation grew, they moved into a rented building in Grant Park. From the beginning, their ethos was to encourage one another to daily follow in the way of Jesus. In doing so, they committed to dedicate their resources to mission. They contacted The Outreach Foundation and discussed their mission plans with staff. Shortly after, 14 members traveled with Outreach on a vision trip to Haiti to see God's work through Haiti Outreach Ministries (HOM). They returned knowing that partnering with HOM would be a strong and meaningful relationship.

Since 2012, Kairos has made ten trips to Haiti, ranging from work projects to medical clinics to teacher training and VBS sessions. Additionally, they support 50 students, including an entire school class, accompanying them from preschool through 7th

grade. Drew Ditzel, Kairos' senior pastor, commented about the relationship with HOM: "When we go to Haiti, the Lord profoundly deepens the bonds that are formed. People open up. When we're engaged in a different way of life, it shows you how we're supposed to encounter Jesus. I've found that we're relying on Jesus instead of thinking we are Jesus."

Priority 2: Building the mission capacity of the global church, especially where the church is vulnerable or growing rapidly

We believe one of our most vital tasks is to help build the capacity of our global partners, especially in leadership equipping and development. The Presbyterian Church in Egypt illustrates this work:

article continued on next page

Kairos traveler Melisa Booher enjoys time with two HOM preschoolers during a class visit.



Outreach trip participants praying for soon-to-be pastor Medhat at the site of his new church at El Sadat City.



About The Outreach Foundation

The Outreach Foundation engages Presbyterians and global partners in proclaiming the good news of Jesus Christ. Because our ministry is Kingdom work, not denominational work, we work with PC (USA), EPC, ECO, Fellowship Community congregations and others. We help congregations build long-term partnerships with the global church that are mutually transformational. Every person, project and partnership we support is directly involved in sharing the Gospel in word and deed.

Our work depends entirely upon the involvement and financial support of mission-minded individuals, congregations and organizations. We receive gifts in our office and disburse them to partners around the world. Established in 1979, The Outreach Foundation is independently governed by a Board of Trustees, all of whom are pastors or officers in their respective congregations.

Our Mission

Connecting Presbyterians to build the church’s capacity to proclaim the Good News of Jesus Christ

Our Convictions

Committed to the historic Christian faith as it is revealed in God’s Word and expressed by the ecumenical creeds and in the Reformed confessions, we affirm that

- Jesus Christ is the only Lord and Savior.
- God’s grace in Jesus Christ is for all people.
- The church exists for God’s glory and God’s mission.
- Discipleship and mission are the calling of every follower of Jesus.
- God connects us in mission through relationships of mutual respect and support.
- The Holy Spirit empowers the church to bear witness to the Good News by its life words and deeds.

OUR PRIORITIES

Helping the church live out its missional calling

Building the mission capacity of the global church, especially where the church is vulnerable or growing rapidly, as together we

- cultivate deep, long-term relationships
- support the work of missionaries
- help each other equip leaders, plant and build churches, and strengthen ministries of compassion

Transforming lives through mission involvement

Reaching Out

Reaching Out is published three times per year by The Outreach Foundation to inform friends and donors about our involvement in God’s mission. Subscriptions are offered free of charge upon request. To request a complimentary subscription, inform us of an address or name change, or for more information about our ministry, please contact us.

The Outreach Foundation
381 Riverside Drive, Suite 110
Franklin, TN 37064
(615) 778-8881
(615) 778-8887 fax
info@theoutreachfoundation.org
www.theoutreachfoundation.org



Steve Wright and his wife, Kay, on one of their Brazil mission trips.

article continued from cover

The Evangelical (Presbyterian) Church of Egypt was founded by American Presbyterian missionaries in 1854. Today, the Synod of the Nile is made up of 392 churches. It is both a vulnerable yet rapidly growing church. Three churches were bombed by the Muslim Brotherhood during the Brotherhood’s governmental reign. But the Synod is undaunted — it has 95 new church plants in operation, with 17 new churches started last year alone. Yet, there are 100 Presbyterian churches currently without a pastor, depending upon evangelists, seminary students and church elders to provide worship leadership.

Medhat Yacoub is one of the “new breed” of leaders in the church. He recently graduated from the Evangelical Theological Seminary in Cairo and is awaiting ordination, yet he already has responsibility for a church. He is leading a new land grant church in El Sadat City outside Cairo. They are currently meeting in a home donated by one of the elders, but construction is in progress for the church building. He leads a congregation of approximately 20 families including 25 children. With great faith and knowing God’s ability at multiplication, they are building a sanctuary to seat 300! God is at work through his people.

Priority 3:
Transforming lives through mission involvement

The heart and joy of mission is relationships — learning how another culture lives and worships; feeling the same emotions as mission partners when confronting poverty, war or persecution; and, frankly, learning how easy it is to be a Christian in America.

Steve Wright of Zionsville Presbyterian Church, has been transformed by mission:

About a year before Steve was to retire, he began to ask God how he should use his time after retirement. God didn’t hesitate responding. He started leading Steve into mission through his church. Steve was appointed to the Mission Commission, which surprised him since he never had much interest in mission previously. Steve became the liaison with The Outreach Foundation for Zionsville’s work in Brazil. As he learned more about it, Steve became intrigued with the church and leadership development work of Jose Pezini, Outreach’s Brazilian missionary.

Seeing is believing. Steve traveled to Brazil to experience it firsthand. He visited church plants and sat in on a pastors’ retreat led by Pezini (even though it was in Portuguese!). During that time, Steve met many Brazilian pastors from around the country, creating strong bonds with them. “Involvement in Brazil with the Brazilians is like family.” Steve commented. “God walked right with us in building relationships.” Since then, many Brazilian pastors have visited First Presbyterian Zionsville, staying in members’ homes and deepening the relationships between the Brazilians and Americans. Many have attended a three day Great Banquet retreat at Zionsville. It has been so meaningful that 17 Zionsville members will travel to Brazil in September to bring the retreat experience to the Brazilians. Steve’s faith has strengthened through all of this. “I see God working in so many different ways,” said Steve. “None of this would have happened without God in the middle of it.” 🙏

Hooked on Mission

Bill and Kelly Christie knew they were hooked on “mission” when they heard Nedson Zulu and Sebber Banda speak about their Tete Province, Mozambique holistic evangelism ministry back in 2009. “It caught me as a magical ministry,” Bill recalled. “I saw two people dedicating their lives to God and could just imagine the difference they were making to the people there.”

Among other things, the ministry builds schools. That struck home for the Christies since both are in leadership roles at Vanderbilt University’s Owen Graduate School of Management in Nashville, Tennessee. Bill is the Francis Hampton Currey Professor of Management in Finance while Kelly is the Assistant Dean for Academic Programs and Student Life. “Education is very important to us,” Kelly said. “We were fortunate to benefit from access to education and to work in this field, and we want to share our passion by offering that same benefit to others.”

After making numerous gifts for Tete schools, they turned their sights to the future. One day they were updating their wills. During the discussion, they stopped, looked at each other, and said, “We have to include Outreach and the Tete ministry.” “It was just so natural,” Bill commented. By doing so, they were ensuring that The Outreach Foundation could continue their work after they were gone. “We’ve been given so much, and this is a meaningful way to give back and express our gratitude to God,” said Kelly.

Join with Bill and Kelly by becoming a member of The Outreach Foundation’s *Great Commission Society*. Society members have included The Outreach Foundation in their estate plans. Several simple sentences in your estate documents or beneficiary designation are all that’s needed.

For more information about The *Great Commission Society* and planned giving opportunities, contact Tom Widmer at The Outreach Foundation by phone (804) 441-3679 or by email (tom@theoutreachfoundation.org). Like Bill and Kelly, you can help ensure that Outreach’s work continues in the future. 🌍



Bill and Kelly Christie

Born in 1946 or before? Congress made the IRA Charitable Rollover permanent, allowing you to donate to charity up to \$100,000 per year tax free from a traditional IRA account. Contact Outreach or your financial advisor for more information.

Beautiful Connections

Though I have many things to write to you, I do not want to do so with paper and ink; but I hope to come to you and speak face to face, so that your joy may be made full.
2 John 1:12

For many years, The Outreach Foundation has been blessed by deep, long-term relationships with partners in Syria and Lebanon. In early 2017, an Outreach team of ten visited both countries, coming alongside friends to “speak face to face.” While there, the need for a new generator for the Presbyterian Church in Fairouzeh became apparent. Excerpts from emails between Outreach Executive Director Rob Weingartner, Rev. Joseph Kassab, Rev. Yacoub Sabbagh and Pastor Dan Willson tell the story and reveal beautiful connections among God’s people all over the world:

February 16, 2017
Dear Rob,

Your gracious presence among us every now and then means a lot for us and the congregations around Syria ... especially the impact of encouraging our pastors who are trying their best to serve faithfully the Lord who called them for such situations.

I am sending you this letter explaining our desperate need for a generator which will help us running our services in the National Evangelical (Presbyterian) Church in Fairouzeh, Syria, a member church in our Synod. As you are aware, power (electricity) is provided for less than six hours a day in Fairouzeh

village. Therefore, having a powerful generator for the church is inescapable.

Rev. Joseph Kassab, General Secretary of the National Synod of Syria and Lebanon

March 3, 2017
Dear Joseph,

I am writing to share the news that the Session of Fremont Presbyterian Church in Sacramento, CA, has voted to give \$15,000 for the purchase of the generator at Fairouzeh... with this news we give thanks for the ways that God’s faithfulness is displayed when his people come together in love and commitment to his mission.

Rob Weingartner, Executive Director of The Outreach Foundation

March 3, 2017
Dear Rob,

God has been so good to our people during this crisis. We pray that Christian ties created out of tragedy and needs; those ties will continue to be themselves our only need in the future.

Rev. Joseph Kassab

March 21, 2017
Dearest Pastor Dan Willson,

We, the Presbyterian Church in Fairouzeh, are truly thankful for your ...help to get us a new generator. I cannot describe what your contribution has done in the life of the church ...like moving from darkness into light.

We offer many services ...including Sunday service, Sunday School(more than 300 kids), women’s



Rev. Yacoub Sabbagh, center, with Outreach travelers Rev. Ed Hurley, Rev. Mark Mueller, Rev. Rob Weingartner, Rev. Graig Flach, and Rev. Jack Baca

group meetings (where we pray, read, sing, meditate, and have a time of fellowship), Bible Study, Young Families meetings ...

Please forward our greeting and thanks to your congregation in Fremont Presbyterian Church, in Sacramento, CA. You helped us write a new story.

*Rev. Yacoub Sabbagh,
Pastor of the Presbyterian Church in Fairouzeh*

April 5, 2017
Dear Rob,

How fulfilling and satisfying to be used by God to support our sisters and brothers in Fairouzeh. We, too, are thankful!

Rev. Dan Willson, Associate Pastor Fremont Presbyterian Church, Sacramento, CA

Lives changed, hearts transformed. Glory to God!

The Outreach team shared stories and photos of their trip to Syria and Lebanon on their trip blog, visit www.theoutreachfoundation.org/trip-blog to read more. Additional trips are listed later in the newsletter — take a look and consider joining us to, as John says, “speak face to face” with partners around the world. 🌍



Madagascar



Sri Lanka



Zambia

FISCAL YEAR 2016

Connecting God's People with God's Work in the World

At Outreach, we are blessed to have the privilege of connecting God's people with God's work in the world. We're honored to work with our donors here in the United States, connecting them with our global mission partners in five continents. Whether it is building new churches in Kenya, training and counseling church leaders in Brazil or providing funds for heating and cooking fuel for Syrians

displaced by war, you, our donors, have blessed us and our partners with yet another record year. For that we thank you.

Because your partnership with us is extremely important, we offer you this summary of 2016 financial activity. This is only a brief snapshot. An audited financial statement is available on our website (www.theoutreachfoundation.org) or from our office

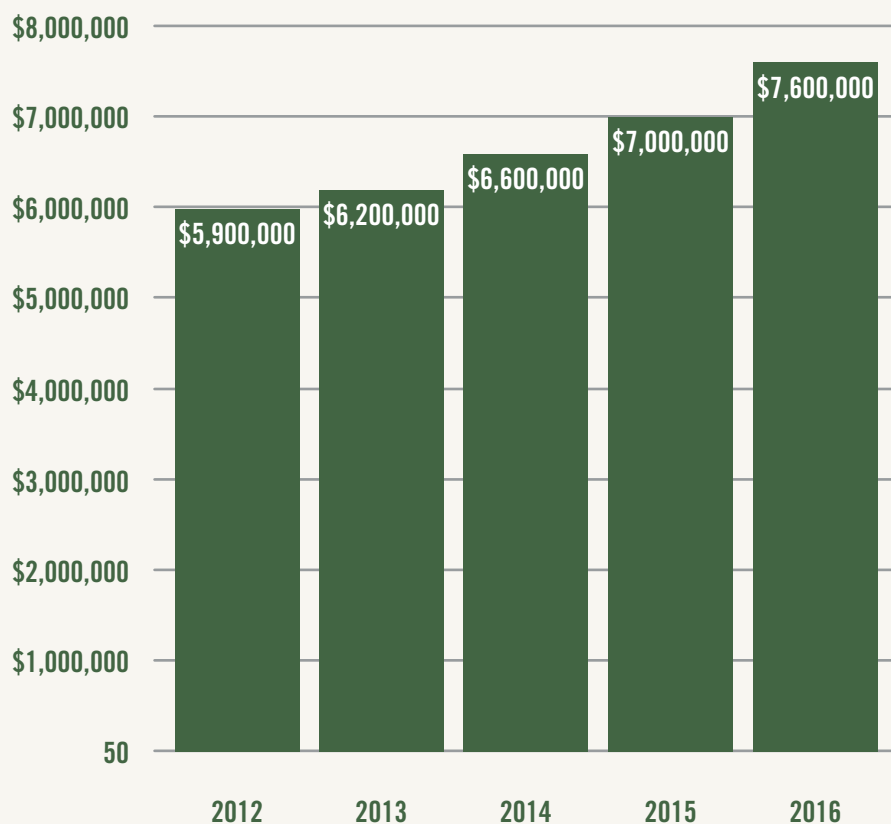
upon request. Or, check out our most recent rating by Charity Navigator at www.charitynavigator.org and type "The Outreach Foundation" in the search bar.

Contributions grow 8.6% to \$7.6 million

As mentioned above, you have blessed us with another record year of donations. Support from individuals/families, churches and organizations topped \$7.6 mil-

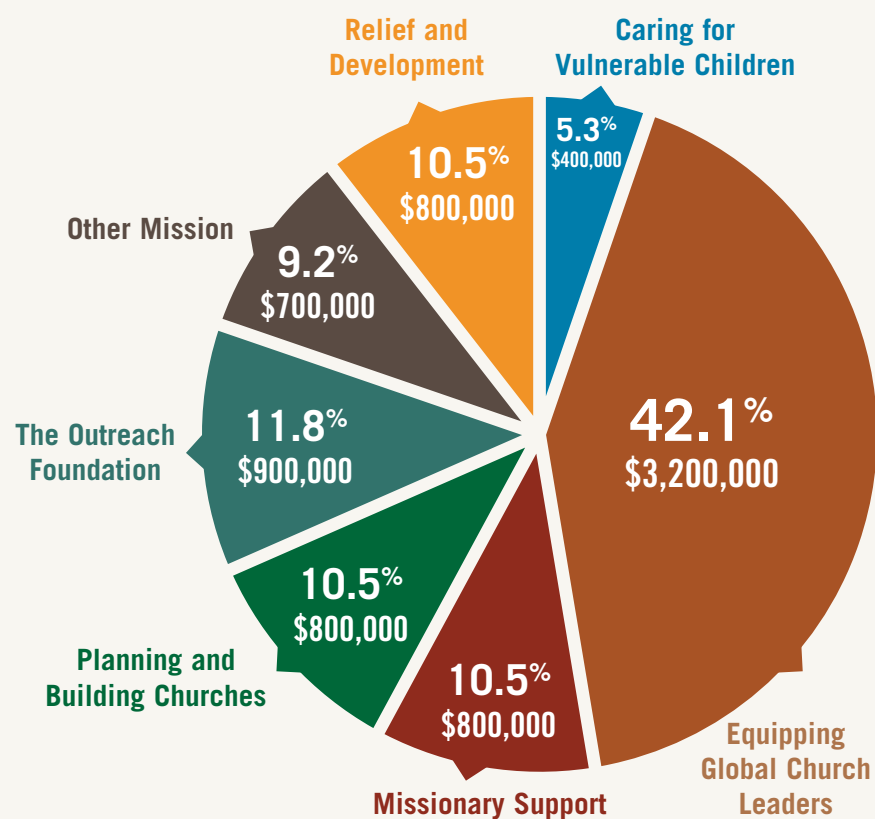
Contributions 2012–2016

Chart 1



2016 Contributions

Chart 2





Please use this QR code to donate now to The Outreach Foundation. We appreciate your generous support!

lion in 2016, reflecting an increase of 8.6% over 2015. Chart 1 reflects our five year contributions history, for which we are most thankful. Chart 2 shows how these gifts were designated.

About our donor partners

The Outreach Foundation received financial contributions from 1,388 donors in 2016, representing individuals/families, churches and organizations. Supporters represent 47 states, the District of Columbia, and various foreign countries. A breakdown of the gifts shows the following:

- 987 individuals gave \$4.4 million
- 365 churches gave \$2.9 million
- 36 organizations, including foundations and companies, gave \$300,000

We think of our ministry as Kingdom work, not denominational work. Outreach does not receive financial support from denominational mission offices.

Although we work with many different denominations, our primary partners are congregations from the extended Presbyterian family. We joyfully partner with presbyteries and congregations from ECO, EPC, Fellowship Community and PC(USA) and others.

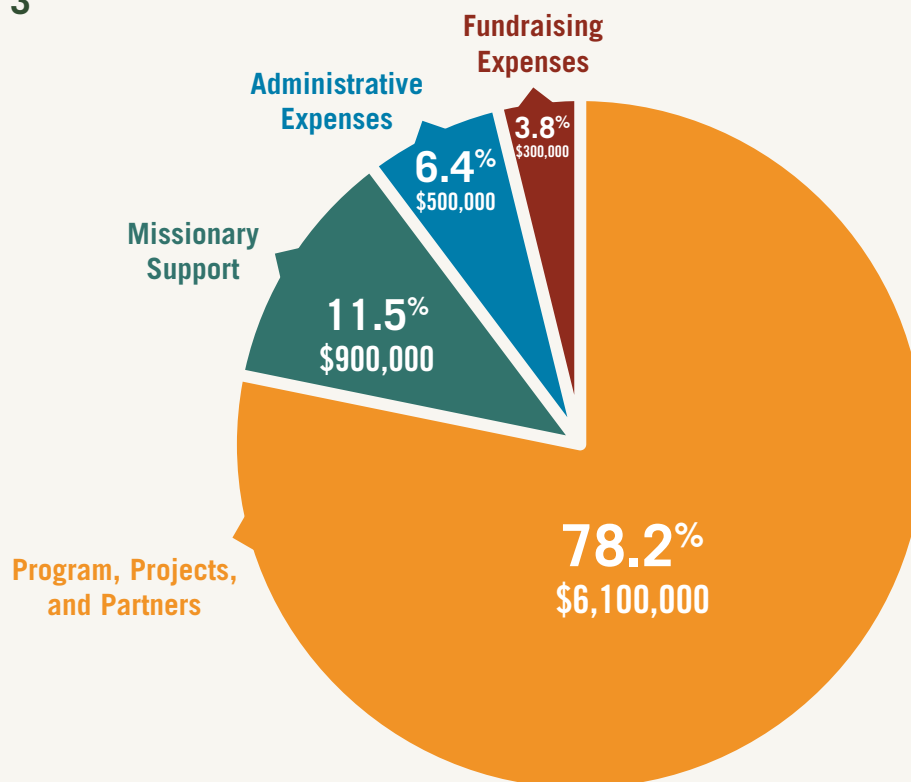
\$7.8 million in disbursements/expenses

Outreach's focus is connecting God's people with God's work in the world. We receive gifts in our Franklin, Tennessee, office and disburse them directly to mission partners around the world. Last year, 89.7% of all disbursements went to our mission partners. We disbursed \$7 million in support of missionaries and projects in 30 countries. See pages eight and nine for detail on the programs that were supported.

Our total expenditures for 2016 were \$7.8 million when administration and fundraising expenses are included (Chart 3). As is typical, total disbursements exceeded funds received during the year. The Outreach Foundation disburses more funds for some programs than were received because these contributions have planned disbursements over multiple years.

2016 Disbursements

Chart 3



We welcome your partnership

Established in 1979, The Outreach Foundation exists to help you develop relationships and participate with global partners in God's mission. We focus on programs and projects that build our global partners' capacity for evangelism and mission. Your generous gifts help make this possible.

Outreach donors give in various and unique ways. Most gifts are current year cash donations. However, other approaches include gifts of securities, disbursements directly from retirement accounts, wills and bequests, and contributions to endowments. Any of these methods may be restricted by designation or directed to the overall ministry of The Outreach Foundation.

One way to appreciate what God is doing in the world is to join us on a discovery trip. Each year, we sponsor 8–10 trips to meet with our mission partners in various global locations to learn about their work and build mission partnerships. Travel with us to see amazing things that the Lord is doing. Check out our trips schedule on page 11 or online at www.theoutreachfoundation.org/trips

For more information about supporting mission-

aries and projects or developing mission partnerships through The Outreach Foundation, please contact us at (615) 778-8881 or info@theoutreachfoundation.org.

Notes to the Charts

Gifts reported in "The Outreach Foundation" include contributions designated for our operations, as well as funds received without restriction. Contributions designated to be used "where needed most" are considered to be unrestricted and are also reported in this category.

Dollars reported in "Missionary Support" include compensation and benefits for missionary personnel, expenses related to their ministry, and, sometimes, specific projects directly related to their work.

"Other Mission" includes a variety of projects for which The Outreach Foundation receives and disburses funds. Dollars reported here represent translation and distribution of Bibles, funds designated for mission trips including scholarships, evangelistic outreach, and other projects that complement our program priorities.

More detailed descriptions of our program priorities, as well as specific ministries, are available online at www.theoutreachfoundation.org.

Our Global Partners Covering Five Continents and Thirty-seven Countries





Overview of Work Funded in 2016

We give thanks to God that the projects and partners listed here were an active part of The Outreach Foundation’s work around the world in 2016. Thank you for your gifts in support of this Kingdom work.

OUTREACH FOUNDATION MISSION STAFF

Rev. Dr. José Carlos Pezini
Stu Ross
Rev. Dr. Sasan Tavassoli
Rev. Dr. Nuhad Tomeh
Rev. Nedson Zulu and Sebber Banda
Dr. Frank Dimmock

MISSIONARIES AROUND THE WORLD

Beisswenger, Philip and Bacilia, » *Guatemala*
Boyd, Jeff and Christi, » *Regional Liaison for Central Africa*
Carriker, Tim and Marta » *Brazil*
Collins, Nancy » *Regional Liaison for East Central Africa*
Cortes-Fuentes, David and Josey Saez-Acevedo » *Cuba*
Day, Kay » *Rwanda*
Ellington, Dustin and Sherri » *Zambia*
Fletcher, John and Gwenda » *DR Congo*
Gartrell, Gordon and Dorothy » *Brazil*
Gorman, Steve and Cinda » *Egypt*
Haswell, Henry and Lottie » *Brazil*
Lim, Choon and Yen Hee » *Regional Liaison for East Asia*
Luke, Todd and Maria » *Mexico*
McCall, John » *Taiwan*
Moore, Bill and Ann » *Japan*
Rice, Bob and Kristi » *DR Congo (2016) and S Sudan (2017)*
Sivalee, Michael and Irene » *Central Brazil*
Smith, Alan and Ellen » *Regional Liaison Eastern for Europe*
Tilton, Doug » *Regional Liaison for Southern Africa*
Turk, Dan and Elizabeth » *Madagascar*
Van Brocklin, Gary and Marlene » *Sri Lanka*
Vandegrift, Keith and Lana Bell » *Cuba*
Wehmeyer, Don and Martha » *Mexico*
Weller, Michael and Rachel » *Ethiopia, South Sudan, Sudan*

**The Outreach Foundation partners with additional missionaries not included in the list above due to their service in sensitive areas of the world.

PROJECTS INTERNATIONAL

- Bibles for New Christians
- Connecting Mission Leaders Conference
- Developing South-South Mission Partnerships
- Frontier Fellowship
- International Theological Education Network (ITEN)
- Ministry of The Outreach Foundation
- Mission Trip Scholarships for Seminary Students and New Pastors
- Missional Leadership Formation Fund
- Missionary Fund
- Mission Advocate
- The Antioch Partners
- Vulnerable Children’s Fund

AFRICA

- The Booth Leadership Initiative (BLI)
- DR Congo**
 - Booth Institutes, Kinshasa
 - Congo Primary Education
 - CPC Low Cost Church Construction (BLI)
 - CPK Low Cost Church Construction (BLI)
 - IPCK Building Fund
 - Presbyterian University of Congo, Ndesha
 - Polyvalent Training Program (BLI)
 - Student Scholarships

Ethiopia

- Bible Translation Project
- EECMY Low Cost Church Building Program (BLI)
- EECMY Rural Literacy Program (BLI)
- EECMY Training/Skills Training Program (BLI)
- Gambela Health Ministry
- Church and School Construction Projects
- Bethel Synod Girls’ School
- University Student Ministry
- EECMY Graduate School of Theology

Ghana

- Akrofi-Christaller Institute for Mission, Theology and Culture

- Presbyterian Church of Ghana, Northern Outreach initiatives (BLI)
- Kenya**
 - Clean Drinking Water in Kenya
 - Karai Orphanage and Primary School
 - Kenya Girls’ Education and Rescue Centers
 - Kenya Mission Coordinator
 - Linda Ross Memorial Library
 - Nyeri Street Children’s Ministry
 - Muindi-Meredith Scholarship Fund
 - Post-secondary Scholarships
 - Sugarbaker Medical Clinic
 - Tumaini and Huruma Children’s Homes
 - Tumaini E-Learning Program
 - Vocational Training Programs/Center
 - PCEA Church Construction Projects
 - PCEA Embulbul School Construction
 - PCEA Evangelist/Skills Training (BLI)
 - PCEA School Construction Projects
 - Presbyterian University of East Africa
 - PCEA Tumutumu Hospital
- Madagascar**
 - FJKM Aids Projects
 - FJKM Evangelism and Outreach Ministries
 - Ivato Theological Seminary
 - Malagasy Children’s Home (Akany Avoko)
 - Topaza Orphanage
- Mozambique**
 - Evangelist/Skills Training Program (BLI)
 - Igreja Presbyterian Church, Holistic Evangelism in Tete Province
- Niger**
 - Evangelical Church of Niger, Rickshaw Taxis
- Rwanda**
 - Busanza Vocational School Construction
 - City Evangelization – Kanombe Community
 - EPR Church Construction
 - Hannah Ministries
 - Presbyterian Ministry for Reconciliation and Healing
 - Scholarships for Presbyterians at PIASS
 - Street Children’s Ministry in Kigali, CPAJ
 - Sunday School Curriculum for Children’s Education
- Sudan and South Sudan**
 - Giffen Institute of Theology

Egypt



Kenya



Russia



- Rebuilding Hope in South Sudan
- Reconcile Peace Institute
- Nile Theological College and Gerief Bible School

Uganda

- Caring for Vulnerable Children in Kamwenge
- Juna Amagara Children’s Home

Zambia

- CCAP Church Chawama Congregation
- CCAP Synod and Church Construction
- Crisis Nurseries in Lusaka
- Inyambo Training Center (BLI)
- Justo Mwale University
 - Evangelist/Tentmaking Program (BLI)
 - Scholarships for Theology Students
- Mwandu UCZ Project
- Namumu Orphanage Center
- Siavonga Congregation
- Community Empowerment Center

Zimbabwe

- Evangelist/Tentmaking Program (BLI)
- Home of Hope
- Lovemore Home Boys Education
- Higher Education for Lovemore Home Boys
- Low Cost Church Construction (BLI)

ASIA

China

- Chinese Bibles
- Continuing Education for Chinese Church Leaders
- Development of a Sunday School Curriculum for Churches
- Mini Libraries for Lay Leaders
- Resources for Lay Leaders
- Theological Education in Jiangsu, Heilongjiang and Shaanxi

India

- Church Planting Movement in Kolhapur

North Korea

- Compassion Ministries with Art and Sue Kinsler
- Bong Su Church Mission to the Hungry

Pakistan

- Adopt a School in Pakistan
- Forman Christian College
- Gujranwala Theological Seminary
- Pakistan Bible Correspondence School in Faisalabad
- Pakistan Christian Recording Ministries
- Pakistan Prayer Ministries with George and Gail McBane
- Maqsood Kamil, Ph. D. Prorgam

EUROPE

Belarus and Russia

- Congregation Projects and Ministries:
 - First Baptist Church, Smolensk
 - Good News Church, Moscow
 - Kostroma Baptist Church
- Davydovo Outreach to Children
- Narnia Center, Children’s Ministry and Publishing
- Orphanage Ministries in Belarus and Russia
- Russian Bibles for Children

Germany

- Castle Community Church and Church Organ fund

MIDDLE EAST

- Refugees/IDP Crisis

Egypt

- Bibles for Egypt
- Evangelical Theological Seminary in Cairo
- Evangelical Church in Egypt, Global Mission
- Evangelical Church in Nasr City
- Garbage City Ministry in Cairo, Center of Love
- Mission and Evangelism in Rural Egypt
- Mission Initiative at the Evangelical Theological Seminary in Cairo
- New Church Development
- Egypt Sister Church Partnerships

Iraq

- Basrah Radio Ministry
- Duhok Relief
- Evangelical Church at Baghdad
- Evangelical Church at Basrah
- Evangelical Church of Kirkuk
- Iraq Appeal Projects
- New Church Development in Irbil

Iran

- Grants for Iranian Christian Church
- Iranian Ministry Coordinator
- PARS-Multimedia Theological Training

Israel and Palestine

- Bethlehem Bible College
- Musalaha – A Ministry of Reconciliation
- Palestinian Bible Society

Lebanon

- Near East School of Theology
- Philemon Ministries
- Sunday School Ministry Expansion at Rabiya Presbyterian Church
- Synod of Syria/Lebanon Ministries

Syria

- Damascus Church
- Mahardeh Schools Expansion
- Syria Relief Projects
- Schools for Syrian Refugee Children in Lebanon

THE AMERICAS

Cuba

- Central Presbyterian Church, Matanzas
- CANIP, National Presbyterian Camp in Cuba
- Church Construction in Cuba
- Evangelical Theological Seminary at Matanzas
- Guanabacoa Campaign for Hope
- Matanzas Presbytery

Costa Rica

- Shalom Teaching Ministry

Guatemala

- Mission and Training Center in Coban

Haiti

- Haiti Outreach Ministries
 - Build a Home in Haiti
 - High School Construction
 - Repatriote Church and Primary School
 - Student Sponsorships

Mexico

- Chiapas Missionary Community
- San Pablo Presbyterian Theological Seminary
- Sureste Presbyterian Theological Seminary
- Cisterns Construction with Todd Luke

Brazil

- Fortaleza Theological Seminary
 - Mission Center
 - Scholarships
- IPIB Mission Partnerships
 - Gaúcho Project – South Brazil
 - New Church Development – Central Brazil (with Michael and Irene Sivalee)
 - Sertão Project – Northeastern Brazil
- SARA Retreat Ministry

United States of America

- Booth Scholars Program
- CabWayLinGo Presbyterian Chapel, West Virginia
- Missional Leadership Formation Fund
- Smaller Church Initiative

**The Outreach Foundation partners with additional projects not included in the list above due to their location in sensitive areas of the world.

Lebanon



Mozambique



Pakistan



“Come and See”

“I left Egypt with an overflowing heart. It is a joy to witness God’s work in Egypt... I’m returning home encouraged by all that I witnessed and experienced. And I’m inspired to dream bigger dreams, trusting that God works in ways far beyond anything we could ever ask or imagine.”

Outreach traveler from 2016 Egypt trip

Outreach trip leaders connected over 100 travelers with partners all over the world in 2016. Friendships were formed, hearts were changed, lives were transformed. Consider the list of trips below and come with us to encourage and be encouraged!

COME SEE WHERE GOD IS AT WORK IN THE WORLD!

Ghana: Witnessing with Joy
July 20–30

Colombia:
Experiencing Vibrant Latino
Missional Movements
August 20–26

Brazil: Church Legacy
and Dynamism
August 27–September 3

Haiti Vision Trip
September 1–4

A Mission-Vision
Trip to Egypt
October 31–November 10

Iraq: A Journey
of Solidarity
Dates TBA

An Opportunity to
See God at Work through
the Church in Cuba
February 2–12, 2018

Please contact Lisa Dill at lisa@theoutreachfoundation.org for more information about travel with The Outreach Foundation. 🌍

Rwanda travelers Heidi Meadows, Rev. Nancy Fox, Andi Gaskins and Projects Coordinator Ebralie Mwizerwa



Year of HIGHLIGHTS



We joyfully welcomed Rev. Jerry Deck, Zionsville Presbyterian Church, Zionsville, IN; Rev. Ryan Moore, First Presbyterian Church, Tulsa, OK; and Caitlin O'Hare, West Hills Church, Omaha, NE to our Board of Trustees.



Notice our enhanced social media presence? We welcomed Marcus DePaula as our new Digital Communications Specialist in January. Friend us on FaceBook and follow us on Instagram and Twitter for the most up to date news on partners around the world!



It was also a pleasure to welcome Rev. Juan Sarmiento, Associate Director for Mission; Dr. Frank Dimmock, Africa Mission Specialist, and Rev. Camille Josey, Small Church Mission Catalyst to our staff. We will share more about their work in future issues.



We're blessed to report that Charity Navigator, the nation's foremost charity evaluator, once again awarded The Outreach Foundation the designation Four Star Charity. We are also honored to be first in the Religious Activities category for Charity Navigator.



Outreach's Board of Trustees developed a strategic plan including three fundamental priorities that direct our work in the world. The priorities are discussed in the cover story and listed on the green panel on page two.

DEEP RELATIONSHIPS

To whom are you loyal — a clothing store, a neighborhood restaurant, maybe a toothpaste brand? Organizations depend on such loyalty — repeat business is critical to long term success.

Similarly, mission organizations like The Outreach Foundation depend upon and are grateful for repeat donors. As mentioned earlier in the newsletter, Outreach received gifts from 987 individual donors last year. Six hundred fifty one of the 987 were repeat donors. Those 651 donors trusted Outreach and appreciated our work enough to partner with us again. We were curious about the loyalty of our donors, so we looked back 20 years. During that period, we were honored to receive gifts from 14,024 unique donors, with 10,440 being repeat donors. Digging deeper, we learned that 6,529 gave gifts five or more times and 2,859 gave 10 or more times. We praise God for the deep donor relationships we have and the trust you show in us.

But we kept digging. We found five donors who have given gifts in each of the past 20 years. It amazed and humbled us. Five families believe in Christ-centered evangelistic mission enough that they wrote checks to

Outreach every year since 1997.

We wanted to learn more, so we contacted one of the families, Rick and Susan Wesley from Winston-Salem, North Carolina. We asked what motivated them to be so consistent in their giving to Outreach year after year. Rick said there were several reasons. First, he said, “I have absolute trust that Outreach will use my gift as intended. There’s never any doubt.” He also said he and Susan appreciate the regular updates they receive about the missionaries and projects they support. They like the photographs and reading the latest news. Finally, Rick commented, “I’ve always liked the idea that I could go visit who I support and see them in action.” True to his word, Rick has traveled to Madagascar and Haiti to visit with his global partners.

We’re extremely grateful for our donor partners — first time and long time. God’s work in the world could not be done without your partnership. 🌍

Rick Wesley and Saicania



The Outreach Foundation 2017 Board of Trustees

Rev. Dr. Nancy T. Fox, Chair
National Presbyterian Church • Washington, DC
Mrs. Betsy Hunt, Vice Chair
Westminster Presbyterian Church • Nashville, Tennessee
Mrs. Pamela L. Bowman, Secretary
Liberty Corner Presbyterian Church • Liberty Corner, New Jersey
Mr. Hal Sauer, Treasurer
First Presbyterian Church • Nashville, Tennessee
Rev. Dr. Jack W. Baca
Village Community Presbyterian Church • Rancho Santa Fe, California
Rev. Dr. Nelson Bell
Highland Park Presbyterian Church • Dallas, Texas
Rev. Dr. James T. Birchfield
First Presbyterian Church • Houston, Texas
Rev. Jerry Deck
Zionsville Presbyterian Church • Zionsville, Indiana
Mrs. Peen Hardy
First Presbyterian Church • Orlando, Florida
Mr. Charles F. Heard, Jr.
Peachtree Presbyterian Church • Atlanta, Georgia
Mr. W. Powell Jones
First Presbyterian Church • Thomasville, Georgia
Mr. Walter E. Lewis
Eastminster Presbyterian Church • Wichita, Kansas
Mr. T. Berry Long, III
First Presbyterian Church • Mt. Dora, Florida
Mr. Thomas F. McDow, III
Westminster Presbyterian Church • Nashville, Tennessee
Rev. Ryan Moore
First Presbyterian Church • Tulsa, Oklahoma
Rev. Dr. Mark C. Mueller
First Presbyterian Church • Valparaiso, Indiana
Mrs. Caitlin O'Hare
West Hills Church • Omaha, Nebraska
Rev. Dr. Robert K. Perkins
Moraga Valley Presbyterian Church • Moraga, California
Rev. Wesley Porto
New Hope Presbyterian Church • Orlando, Florida
Rev. Dr. G. Christopher Scruggs
Advent Presbyterian Church • Cordova, Tennessee
Ms. Kirsten Shaw
Covenant Presbyterian Church • Jackson, Mississippi
Ms. Caryl Weinberg
First Presbyterian Church • Evanston, Illinois
Mr. Robert N. Wesley, Jr.
First Presbyterian Church • Winston-Salem, North Carolina
Rev. Fakhri Yacoub
The Christian Arabic Church • Richmond, Virginia

Trustees Emeriti

Mrs. Marj Carpenter
First Presbyterian Church • Big Spring, Texas
Rev. Dr. Randy Kowalski
First Presbyterian Church • Greenville, South Carolina
Dr. Alex E. Booth, Jr.
First Presbyterian Church • Kenova, West Virginia

The Outreach Foundation Staff Leadership Team

Rev. Dr. Rob Weingartner, Executive Director
Linda Patrick, Associate Director for Administration and Finance
Marilyn Borst, Associate Director for Partnership Development
Tom Widmer, Director of Development
Rev. Juan Sarmiento, Associate Director for Mission
Rev. Steve Bryant, Director Booth Leadership Initiative
Rev. Dr. William T. Bryant, Executive Director Emeritus

Support Staff

Lucy Battle, Accounting/Administrative Assistant
Elizabeth Carter, Communications Coordinator
Marcus dePaula, Digital Communications Specialist
Lisa Dill, Executive Assistant
Erica Jackson, Database Coordinator
Ebralie Mwizerwa, Projects Coordinator

Mission Staff

Rev. Dr. Jeff Ritchie, Mission Advocate
Rev. Dr. José Carlos Pezini, Portuguese-Language Ministries Coordinator
Stu Ross, East Africa Coordinator
Rev. Dr. Sasan Tavassoli, Coordinator of Iranian Ministries
Rev. Nedson Zulu, Project Manager, Tete Province Mozambique
Sebber Banda, Public Health Nurse, Tete Province, Mozambique
Dr. Frank Dimmock, Africa Mission Specialist
Rev. Dr. Nuha Tomeh, Middle East Mission Consultant
Rev. Camille Josey, Small Church Mission Catalyst



381 Riverside Drive, Suite 110
Franklin, TN 37064

ADDRESS SERVICE REQUESTED

Did You Know?



As we celebrate the 500th anniversary of the Reformation there are more Protestant Christians in Africa than in North America and Europe combined.*



Of the five countries with the largest Protestant populations, four different continents are represented. They are North America (United States), South America (Brazil), Asia (China) and Africa (Nigeria and South Africa).



This year marks the 180th anniversary of the establishment of the first Presbyterian mission board in the United States. Prior to that, Presbyterian missionaries were sent in collaboration with other Reformed churches (Congregationalists, Baptists and Dutch Reformed) through the American Board of Commissioners for Foreign Missions.



The Outreach Foundation has among its partners the largest Protestant denomination in any given country (China) and the largest Protestant denomination in the Middle East (Egypt) along with many others historically related to U.S. Presbyterians in mission.

*Source: Center for the Study of Global Christianity.